

WE VALUE



YOUR HOME



Brewhouse Yard, Wallingford
£1,400 Per Month



Available Immediately for Long-Term Let, Unfurnished

This well-presented two-bedroom ground floor apartment is located within the sought-after Brewhouse Yard development, offering modern living in the heart of Wallingford.

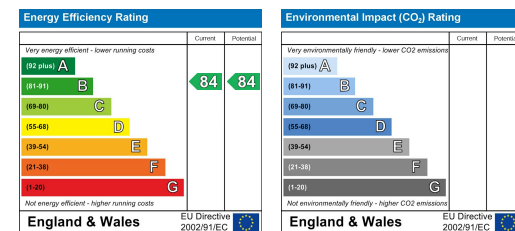
The contemporary Nobilia kitchen is fitted with integrated appliances and opens onto a spacious lounge/diner, where French doors lead to a private courtyard. Two double bedrooms provide comfortable accommodation, both featuring built-in wardrobes. A shower room completes the apartment.

Situated within easy reach of shops, restaurants, and green spaces, the property also benefits from excellent transport links to nearby villages, Reading, and Oxford.



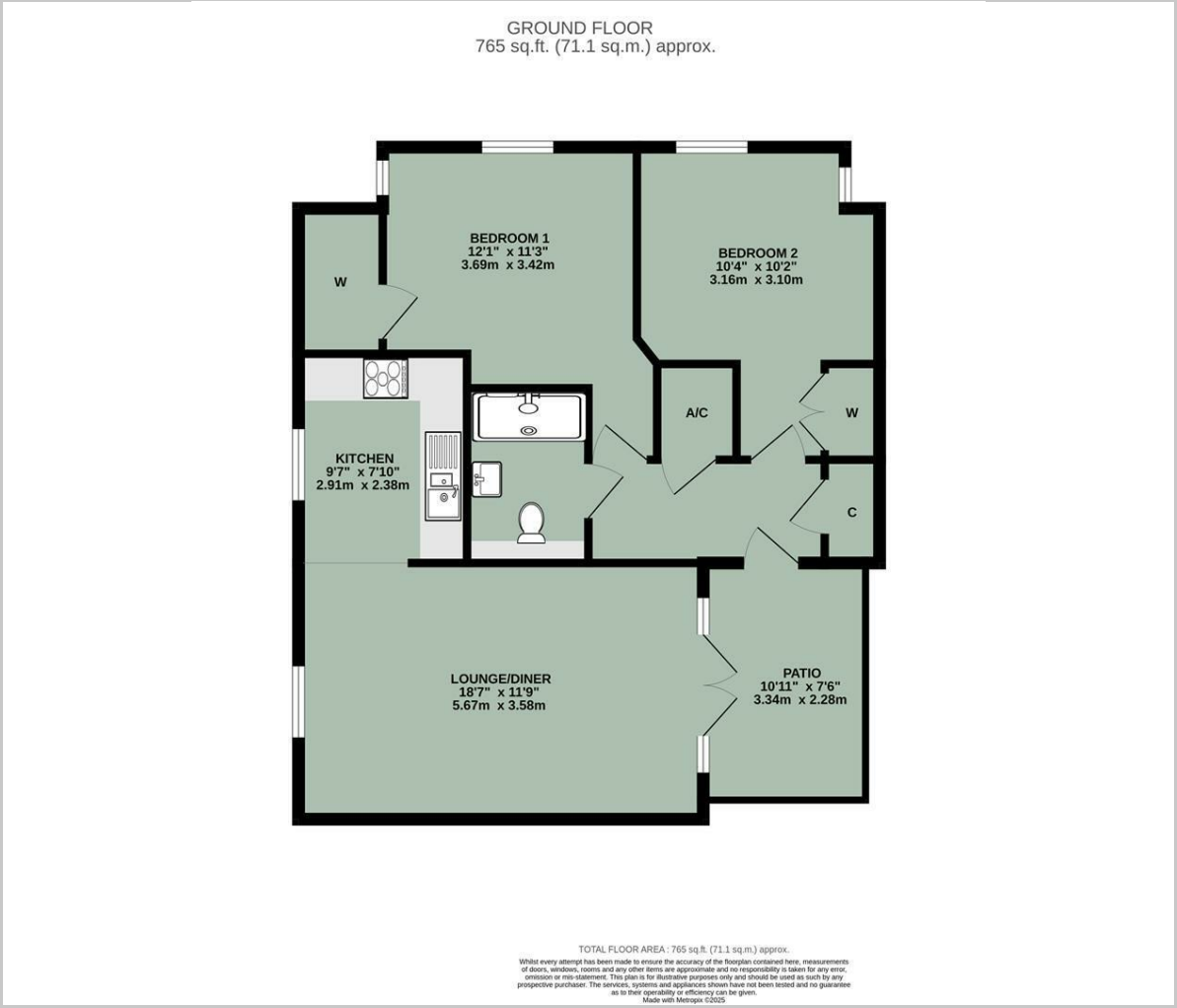


- AVAILABLE IMMEDIATELY FOR LONG-TERM LET, UNFURNISHED
- GROUND FLOOR APARTMENT
- TWO DOUBLE BEDROOMS WITH BUILT-IN WARDROBES
- PREMIUM NOBILIA KITCHEN WITH INTEGRATED APPLIANCES
- WALLINGFORD TOWN CENTRE LOCATION
- PRIVATE PATIO AREA
- EASY ACCESS TO OXFORD, READING, DIDCOT & HENLEY
- CONTEMPORARY SHOWER ROOM
- UNDERFLOOR HEATING



Energy Efficiency Graph

Floor Plan



Area Map



Viewing

Please contact our In House Sales & Lettings Office on 01491 839999 opt.1
if you wish to arrange a viewing appointment for this property or require further information.

These particulars, whilst believed to be accurate are set out as a general outline only for guidance and do not constitute any part of an offer or contract. Intending purchasers should not rely on them as statements of representation of fact, but must satisfy themselves by inspection or otherwise as to their accuracy. No person in this firms employment has the authority to make or give any representation or warranty in respect of the property.

28 St Martins Street, Wallingford, Oxfordshire, OX10 0AL
Tel: 01491 839999 opt.1 Email: sales@inhouseestateagents.co.uk www.inhouseestateagents.co.uk